

PLAN AND FIELD NOTES OF BLOCKS A TO J INCLUSIVE LOT 5834 AND BLOCKS A TO K INCLUSIVE LOT 5833 KAMLOOPS DIVISION YALE DISTRICT

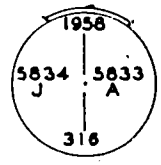
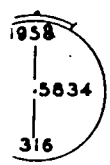
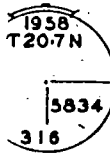
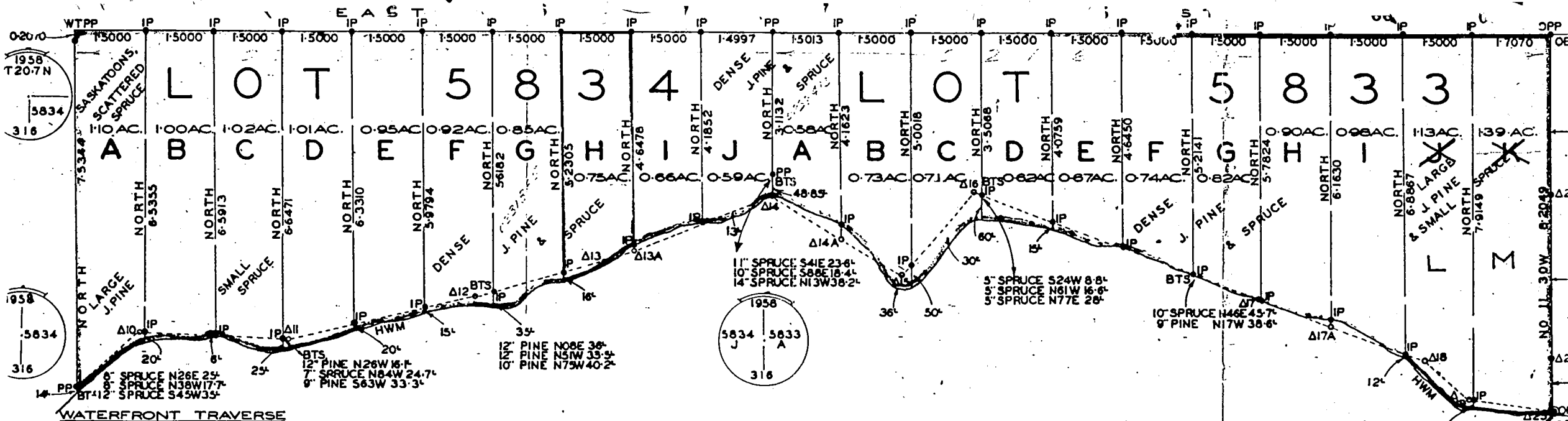
SCALE: 1 INCH — 2 CHAINS.

- LEGEND
- IP DENOTES IRON POST SET
 - PP DENOTES STANDARD PIPE POST SET
 - OPP DENOTES STANDARD PIPE POST FOUND
 - OPCON DENOTES STANDARD CONCRETE POST FOUND

BEARINGS ARE ASTRONOMIC DERIVED FROM SOLAR OBSERVATIONS
TAKEN AT THE SOUTHWEST CORNER OF D.L. 5834.

0218 517
0218 217
0218 717
0218 317

UNSURVEYED CROWN LAND



0	N49.34.10E	1.8647	SWC-Δ16	N40.09.20E	2.0458
	S87.52.10E	0.0806	IPSWD	S69.13.20E	0.1933
	S87.52.10E	1.5010	IPSWF	S69.13.20E	1.6043
	S87.52.10E	1.5010	IPSWF	S69.13.20E	1.6043
	S87.52.10E	0.1305	IPSWG	S69.13.20E	1.6043
	N78.48.30E	1.4067	Δ17	S69.13.20E	1.5192

ELEVATION 5,100 FEET

DOMINIC LAKE

L. G. T. MULLIN OF THE CITY OF VICTORIA FOR THE PROVINCE OF BRITISH COLUMBIA COMMENCED THE SURVEY AT...