

20-NO

PLAN NO. KAP57210

Deposited in the Land Title Office at Nanaimo, B.C.

this 22 day of APRIL 1992

Ken McDonald
Deputy Registrar

DF KF55364 R

REFERENCE PLAN OF EASEMENT THROUGH
BLOCKS A AND D, DISTRICT LOT 5222,
OSOYOOS DIVISION YALE DISTRICT.

SCALE 1:500



B. C. S. 82L. 042

BOOK OF REFERENCE	
PARCEL	AREA REG'D
BK. A. D. L. 5222, O. D. Y. D.	226 m ²
BK. D. D. L. 5222, O. D. Y. D.	197 m ²

LEGEND

Bearings are astronomic and are derived from Survey Plan of District Lot 5222.

All distances are in metres and decimals thereof unless otherwise shown.

Bearings to bearing trees are magnetic.

● Standard Capped Post Found.

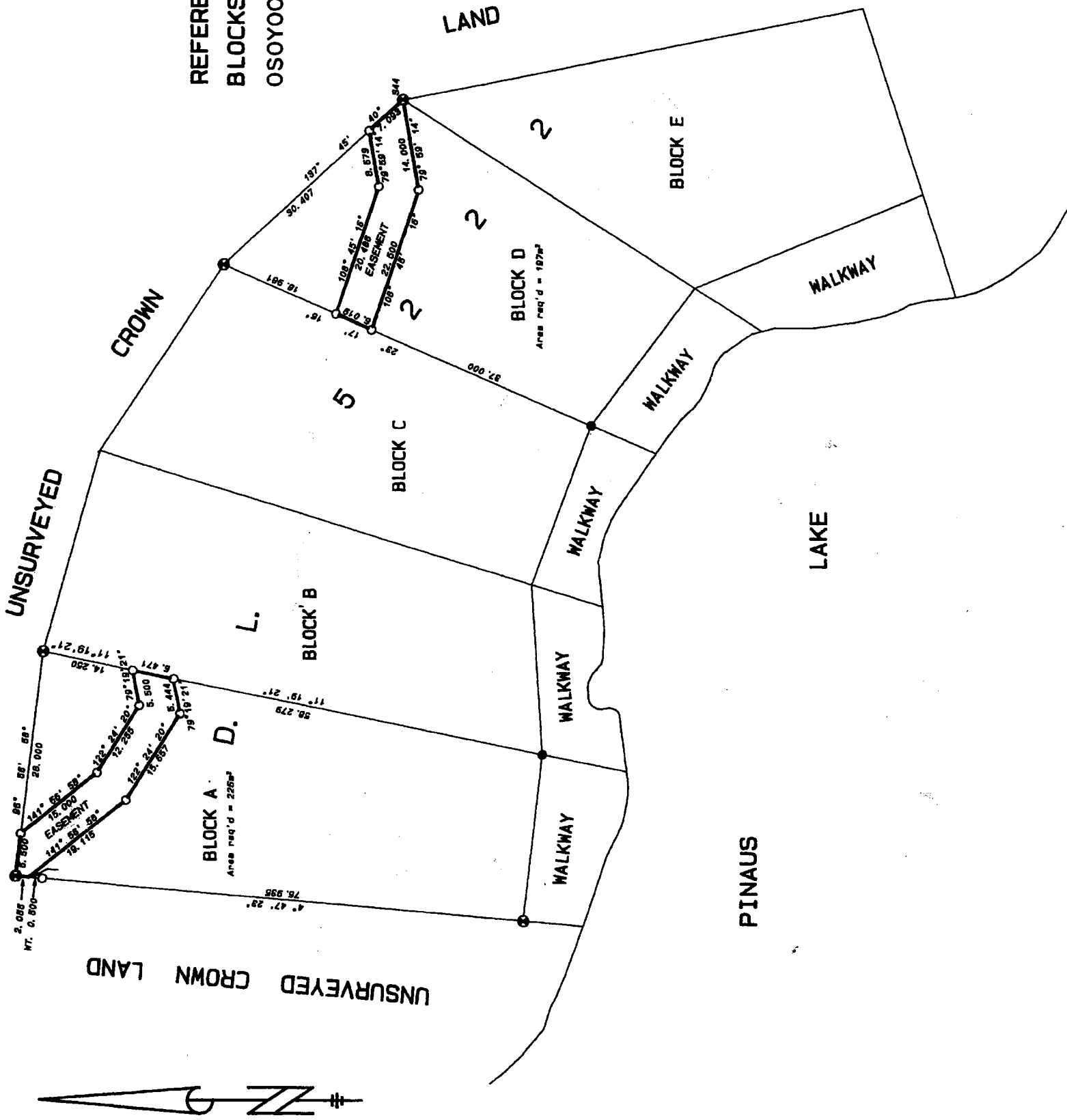
● Standard Iron Post Found.

○ Standard Iron Post Placed.

This plan lies within the Regional District of North Okanagan.

I, Rodney C. Power, a British Columbia Land Surveyor of the City of Vernon in British Columbia certify that I was present at, and did personally superintend the survey represented by this plan and that the survey and plan are correct. The survey was completed on the 29th Day of August 1991

Rodney C. Power
B. C. L. S.



R. C. POWER & ASSOCIATES
2918 - 29TH STREET
VERNON, B. C. V1T 5A8
TEL. 549-1285, TELEFAX. 549-7472 FILE B2456-9E